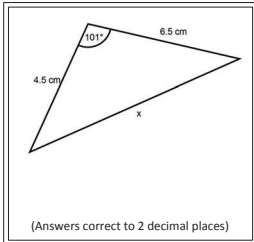


14.23

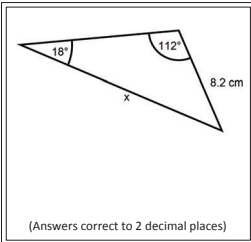


Using the sine and cosine rules
to calculate lengths

www.mathbox.org.uk

A

8.25

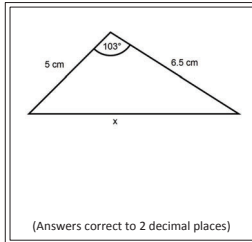


Using the sine and cosine rules
to calculate lengths

www.mathbox.org.uk

B

24.60



Using the sine and cosine rules
to calculate lengths

www.mathbox.org.uk

C

11.21

Two ships leave a port at the same time. Ship X sails on a bearing of 023° for 15 km. Ship Y sails on a bearing of 165° for 18 km.

What is the distance between ship X and ship Y?

(Answers correct to 2 decimal places)

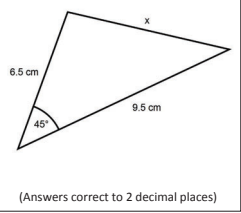
Using the sine and cosine rules
to calculate lengths

www.mathbox.org.uk

D

17.35

Work out x

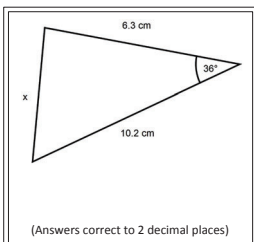


Using the sine and cosine rules
to calculate lengths

www.mathbox.org.uk

E

15.24

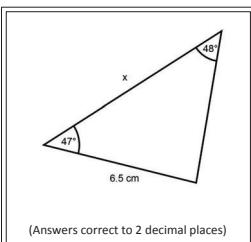


Using the sine and cosine rules
to calculate lengths

www.mathbox.org.uk

F

7.24



Using the sine and cosine rules
to calculate lengths

www.mathbox.org.uk

G

19.44

Two ships leave a port at the same time. Ship A sails on a bearing of 333° for 10 km. Ship B sails on a bearing of 045° for 15 km.

What is the distance between ship A and ship B?

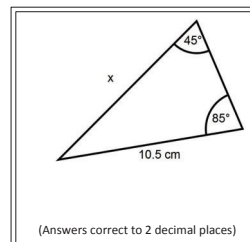
(Answers correct to 2 decimal places)

Using the sine and cosine rules
to calculate lengths

www.mathbox.org.uk

H

3.78



Using the sine and cosine rules
to calculate lengths

www.mathbox.org.uk

I

8.71

A treasure hunter leaves his jeep and walks 8 km on a bearing of 076° and then a further 10 km on a bearing of 045° .

How far is he from his jeep?

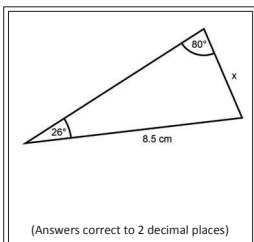
(Answers correct to 2 decimal places)

Using the sine and cosine rules
to calculate lengths

www.mathbox.org.uk

J

8.58

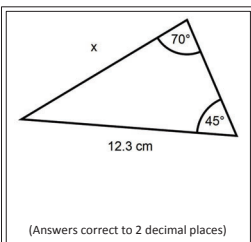


Using the sine and cosine rules
to calculate lengths

www.mathbox.org.uk

K

6.31

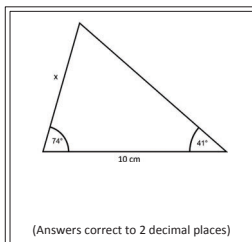


Using the sine and cosine rules
to calculate lengths

www.mathbox.org.uk

L

50.60

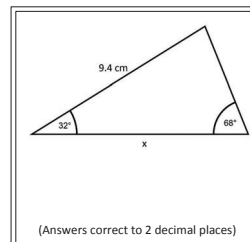


Using the sine and cosine rules
to calculate lengths

www.mathbox.org.uk

M

20.30



Using the sine and cosine rules
to calculate lengths

www.mathbox.org.uk

N

9.98

Two ships leave a port at the same time. Ship A sails on a bearing of 193° for 14 km. Ship B sails on a bearing of 152° for 17 km.

What is the distance between ship A and ship B?

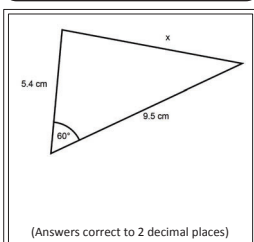
(Answers correct to 2 decimal places)

Using the sine and cosine rules
to calculate lengths

www.mathbox.org.uk

O

9.26



Using the sine and cosine rules
to calculate lengths

www.mathbox.org.uk

P

14.79

The hands of a clock are 9 cm and 12 cm. What is the distance between the tips of the hands at 7 o'clock?

(Answers correct to 2 decimal places)

Using the sine and cosine rules
to calculate lengths

www.mathbox.org.uk

Q

31.22

The hands of a clock are 9 cm and 12 cm. What is the distance between the tips of the hands at 10.30?

(Answers correct to 2 decimal places)

Using the sine and cosine rules
to calculate lengths

www.mathbox.org.uk

R

9.05

Ship Y is 60 km south-east of Ship X. Ship Z is 70 km due south of Ship X. How far is ship Y from ship Z?

(Answers correct to 2 decimal places)

Using the sine and cosine rules
to calculate lengths

www.mathbox.org.uk

S

6.72

The hands of a clock are 9 cm and 12 cm. What is the distance between the tips of the hands at 5.12?

(Answers correct to 2 decimal places)

Using the sine and cosine rules
to calculate lengths

www.mathbox.org.uk

T